



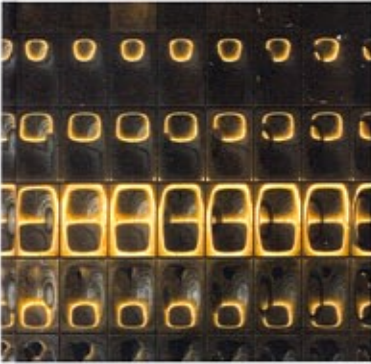
Elliott + Associates Architects
 Department of Architecture
 GRAFT
 Concrete Architectural Associates
 Janson Goldstein LLP
 Joey Ho Design
 GILLER SCOFIELD + RENFRO
 Geigo Isihl + Future-scape Architects
 Slabe Architecture
 GRAFT
 Pascal Arquitectos
 Saudier + Perrutis architectes



100% CLASSICAL CASES OF INTERIOR DESIGN

RIHAN.CC
 H.K. RIHAN INTL CULTURE SPREAD LIMITED

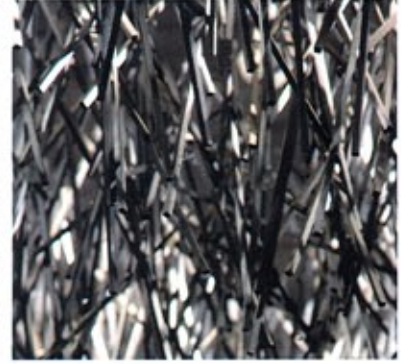
Elliott + Associates Architects
 Department of Architecture
 GRAFT
 Concrete Architectural Associates
 Janson Goldstein LLP
 Joey Ho Design
 GILLER SCOFIELD + RENFRO
 Geigo Isihl + Future-scape Architects
 Slabe Architecture
 GRAFT
 Pascal Arquitectos
 Saudier + Perrutis architectes



Joey Ho Design
 Systerke
 HBY IV Design Associates Inc.
 Tjep.
 E GARTI
 Paul de Rutter
 Concrete Architectural Associates
 GRAFT
 Ippolito Fleitz Group - Identity
 Architects
 Klein Dykman architecture
 Janson Goldstein LLP



Joey Ho Design
 Systerke
 HBY IV Design Associates Inc.
 Tjep.
 E GARTI
 Paul de Rutter
 Concrete Architectural Associates
 GRAFT
 Ippolito Fleitz Group - Identity
 Architects
 Klein Dykman architecture
 Janson Goldstein LLP





Designer: Slade Architecture

Location: 22 East 1st Street, New York, New York

Date Project Completed: 2008

Project Team: James Slade, Hayes Slade, Emily Andersen

Interior Design Firm: Slade Architecture

Photographer: Jordi Miralles

Surfaces are covered in materials that manipulate optical effects and promote ambiguous readings of the planes. By juxtaposing aluminum panels with translucent / back mirrored glass and mirrored glass the viewer is invited to investigate the character of the space.



A-A SECTION

AVALON BOWERY PLACE

At Avalon Bowery Place II, 22 East 1st Street, we were charged with designing the interior common spaces for this ninety-unit rental apartment building by the developer AvalonBay Communities. We collaborated with SLCE Architects (Architect-of-Record) and Arquitectonica (Building envelope design).

Chrystie Place is distinguished by its location in Manhattan's Lower East Side which is characterized by lively and fashionable streetlife. We sought to maximize this by suggestively bringing the streetscape into the building and pushing the significant entry threshold to the back of the lobby through the use of color and finishes. The recycled glass terrazzo floor in the lobby provides an element that is a transition on a micro scale (as well as being an environmentally friendly product) because it blends a cement suggestive of the sidewalk with glass fragments that pick up the glass elements in the lobby. Grouping the concierge, mail and package amenities into a monolithic bar which is clad in aluminum and satin-etched glass creates a massive wall. This becomes the effective boundary between the public street zone and the residential area.

The floor opening into the cellar-level lounge opens that area to the street with a double space at the facade, making the interior life of the building explicit to the street level. The satin etched clad double height wall we reflect the street life animating the wall of the lobby and the basement lounge to the streetlife. At the same time the wall invites passerbys to see the interior activity in the basement reflected at street level. This works with the idea of seeing and being seen which is so much a part of the neighborhood and attraction.

Surfaces are covered in materials that manipulate optical effects and promote ambiguous readings of the planes. By juxtaposing aluminum panels with translucent/back mirrored and mirrored glass we invite the viewer to investigate the character of the space. ▲

