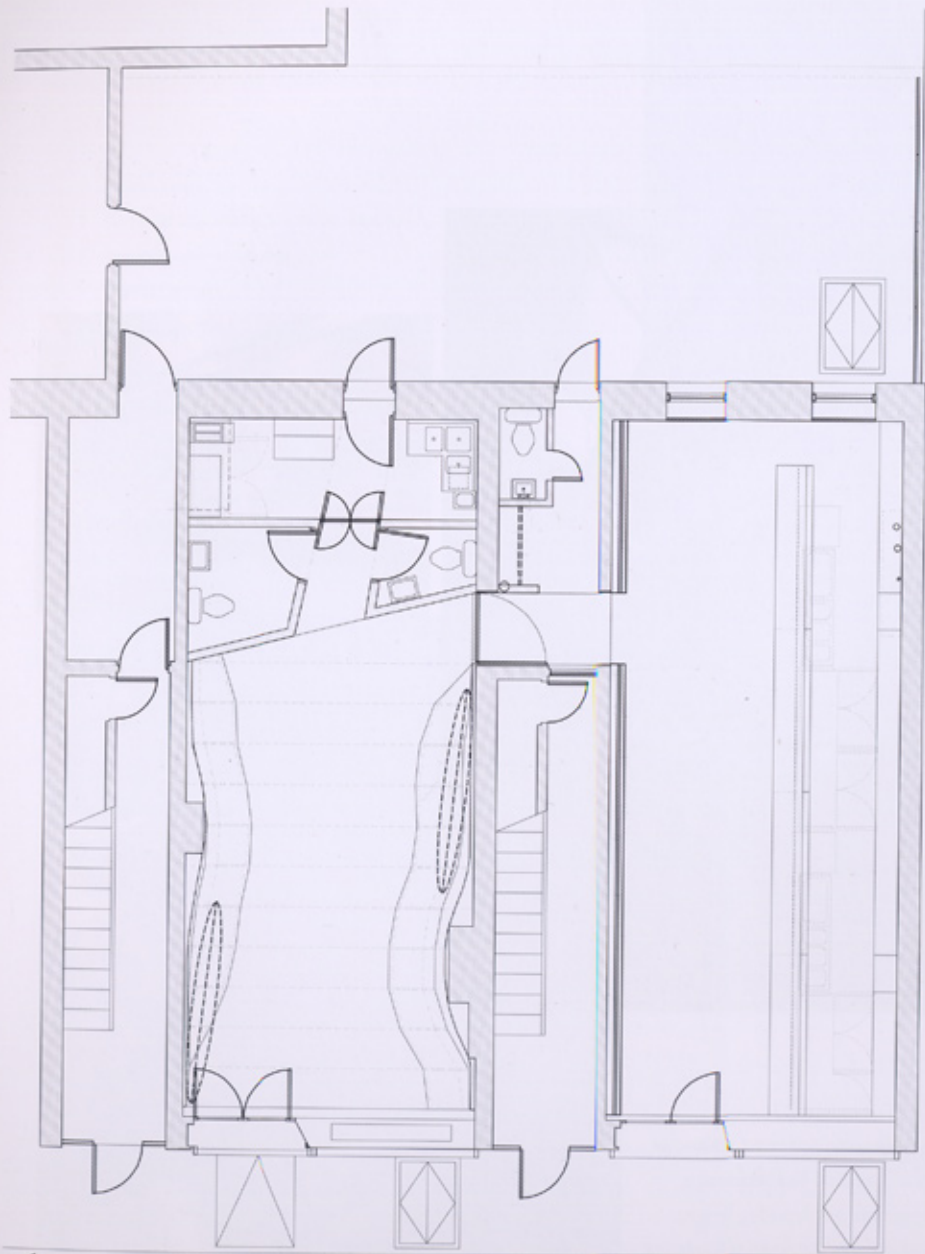


100 of the World's Best  
**BARS**

**PARTY IN STYLE**

images  
Publishing



- 1 Floor plan
- 2 Bar
- 3 Wall detail
- 4 Main bar and elk head
- 5&6 lounge with passage to bar area
- 7 Lounge detail

Photography: Jordi Miralles



2



5



6

7

NEW YORK, NEW YORK, USA

## Totem Bar

CHO SLADE ARCHITECTURE WITH ANTHONY FONTENOT

**Usage: Bar/restaurant/lounge** The architects connected two separate storefronts and created a bar and restaurant/lounge, emphasizing the distinction between the two environments. The client was interested in totems and carved panels, exhibiting them prominently, and building spaces around them. In response, the architects decided that the idea for each room should come from ideas embedded in totems.

**Area: 1614 square feet/  
150 square meters**

For the bar, the focus was on the object quality of totems, as freestanding objects in a landscape. The bar becomes the central focus of the space but each component has a strong separate quality.

In the lounge, the architects wanted to explore the idea of carving itself, how a totem is carved out of one tree, one material. This space is formed in felt. The entire space is a container defined by one material that unifies the wall, ceiling, seating, and tables. In contrast to the bar, this space is more like a cave carved out of felt.

Additionally, these spaces offer distinct experiences, with the bar more amenable to mixing and meeting while the restaurant/lounge is closer and fosters a relaxed, intimate setting.