

Slade Architecture

Apartment in Miami Beach



This apartment in South Beach, Miami was designed for a young couple as a very "Miami" vacation home. Only occupied temporarily by the client and occasional guests, the renovation aimed to maximize the ocean views and open, informal atmosphere while being flexible enough to retain privacy.

In the original layout two bedrooms were separated from the living room by sheetrock walls coming off the continuous curtain wall so the expansive view was cut into three. The primary objective was to free the whole width of the curtain wall so all the windows could be seen at once, using materials and colors that suggest a continuation of the interior into the exterior.

To achieve this openness and yet retain the bedrooms, two transformable "walls" were designed, a moving wall unit and a pivot wall. They provide a dynamic, flexible way of configuring the space so the bedrooms can be incorporated into the main living space, creating a much bigger area, and the windows and views are shared between spaces. The guest room has a combination storage closet and wall which hangs from the ceiling and slides out from the demising wall to create a bedroom. When folded and closed the space becomes part of the living area. Operated by a removable crank-driven mechanism the wall incorporates drawers, a hanging space and the door to the bedroom and can conceal the Murphy Bed mounted on the demising wall.

A 10 foot wide full-height pivoting wall was created for the master bedroom which opens so the window can be seen from the living area while protecting the bedroom's privacy.

Corners were rounded off to create a continuous flowing surface that starts in the entry and ends in this operable pivot wall, accentuating the depth of the apartment.

The bed and the cantilevered desk in the master bedroom were designed in 3D on the computer, then manufactured from solid blocks of foam reinforced with steel and aluminum and covered in a lacquer finished, fiberglass skin. This finish is reminiscent of a surfboard, in keeping with the environment and the client's personal interest in surfing. The desk is anchored to a floor-to-ceiling steel column embedded in the millwork. The bed shape came by lofting a flower shaped base with a rectangular bed. The underside and shape of this bed are important because they are reflected in the glossy resin floor. It is a loose piece of furniture that sits on the floor. The finish materials were carefully chosen to accentuate the view and internalize the ocean, sky and sand: the blue custom Resin floor has a sand-like texture with a smooth surface while the translucent curtains enhance the blue and the glossy white walls reflect the ocean. The interior view, with its rosewood paneling and warmer colors, emphasizes solidity in contrast with the bright finishes on the ocean side.

Location:

Miami, Florida, USA

General Contractor:

Edward Nieto Design Group

Moving wall unit fabricator:

Jesus Tejedor

Stereo A/V:

Red Rose (NY)/ Intersect (Miami)

Fiberglass desk and Bed:

Slade Architecture (Design) and
Tom McGuire (Fabrication)

Resin Floors:

Fusion Floors

Curtains:

Deco Center

Furnishings:

Slade Architecture

Photographs:

Ken Hayden / Redcover.com





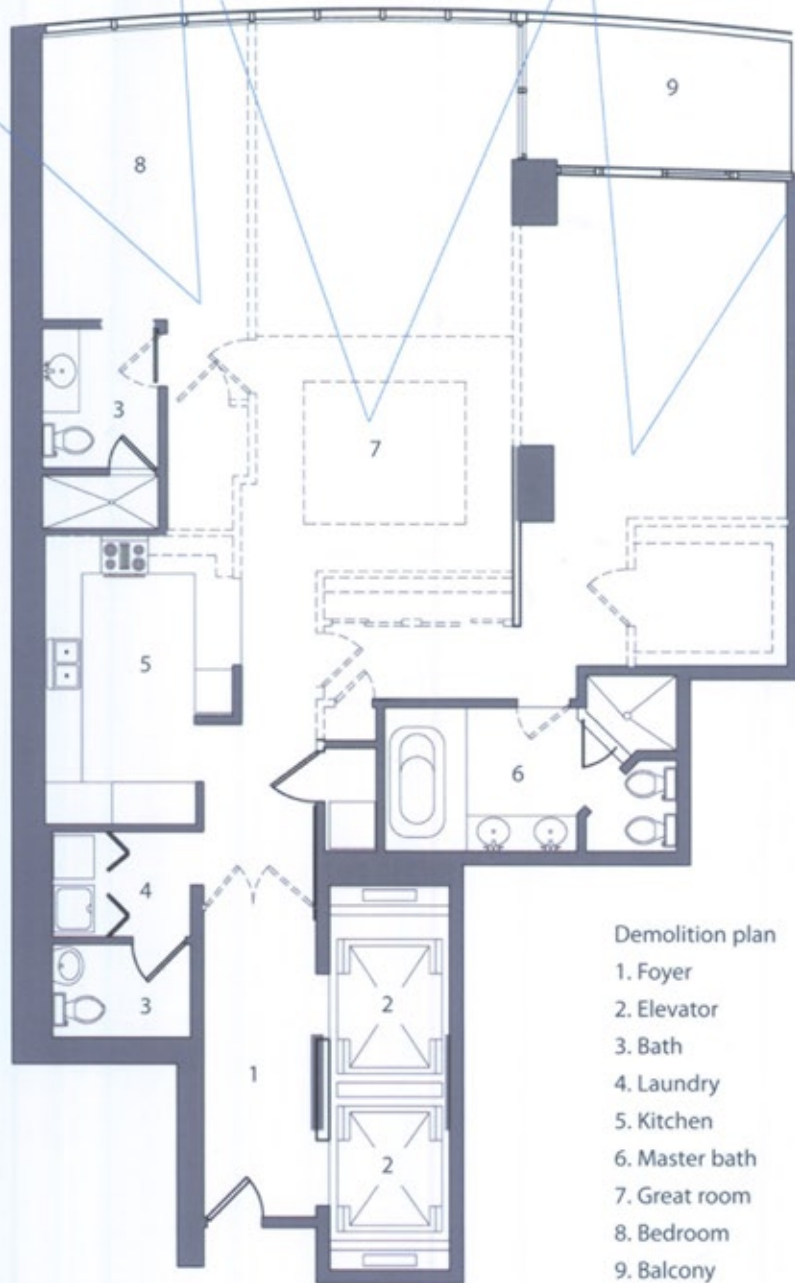
Existing view at guestroom



Existing view at living room



Existing view at master room



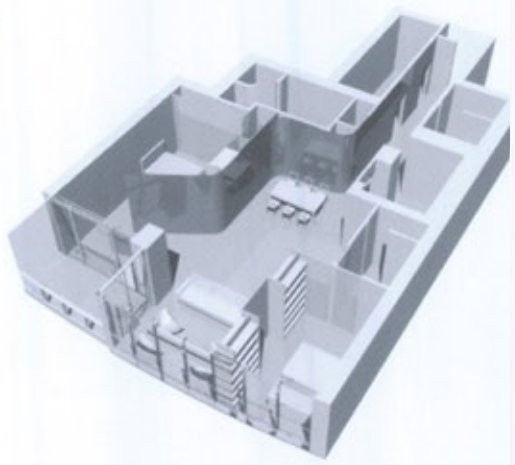
Demolition plan

- 1. Foyer
- 2. Elevator
- 3. Bath
- 4. Laundry
- 5. Kitchen
- 6. Master bath
- 7. Great room
- 8. Bedroom
- 9. Balcony



- Demolition plan
1. Foyer
 2. Elevator
 3. Bath
 4. Laundry
 5. Kitchen
 6. Master bath
 7. Great room
 8. Bedroom
 9. Balcony
 10. Office
 11. Master bedroom

In the original layout two bedrooms were separated from the living area by sheetrock walls coming to a continuous curtain wall. An expansive view was cut into the living area. The primary objective was to open up the whole width of the curtain wall so all the windows could be seen at once, using materials and details that suggest a continuation of the interior into the exterior. To achieve this openness and to retain the bedrooms, two formable "walls" were designed: a moving wall unit and a pivot wall. They provide a dynamic, flexible way of configuring the space so that bedrooms can be incorporated into the main living space, creating a bigger area, and the window views are shared between spaces.









The finish materials were carefully chosen to accentuate the view and internalize the ocean, sky and sand: the blue custom Resin floor has a sand-like texture with a smooth surface while the translucent curtains enhance the blue and the glossy white walls reflect the ocean. The interior view, with its rosewood paneling and warmer colors, emphasizes solidity in contrast with the bright finishes on the ocean side.





