

THIRDPOINT OFFICES

The restoration of these offices, located in one of New York's most exclusive districts, was the commission for this project. In addition to asking for the aesthetical integration into the surroundings, the client requested that the architects create a sober atmosphere for working. Bright colors and excessively avant-garde materials have therefore been avoided.

The offices occupy the top floor of the building and are formed by five private and individual offices, a meeting room, and a rest area for the employees.

The natural lighting is one of the most remarkable components of this project. Large windows that stretch from the ceiling down to about two feet from the floor allow the sunlight to reach this floor. This drastically reduces the need for artificial lighting, and, consequently, halogen lights have been installed in just a few specific places away from the windows.

The floor has been carpeted throughout most of the office. The partitions were an important element, since privacy was needed for each of the offices—which feature translucent glass doors.

As the client is an art collector who wished to express his interest for the contemporary world, the architects have designed this space as if it were floating above the city.

The interior is therefore meant to suggest a cloud and views of the city skyline dominate throughout the space. The façade is a continuous wall almost entirely made of glass, which, to protect the privacy of the offices, has been made from Lumisty, a material that is transparent or opaque depending on the angle of vision. In this case, from an angle of more than 25 degrees the walls are opaque, whereas when entering the offices from the elevator, they are transparent.

The division between the offices runs perpendicular to the façade and was custom made, in stained gray wood with horizontal grain. The result is a series of offices whose appearance evokes the mass of buildings outside.

ARCHITECT/DESIGNER:

SLADE ARCHITECTURE TEAM

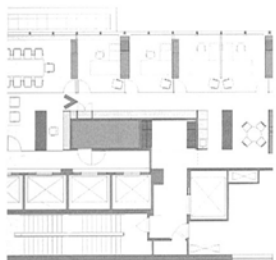
Client: Thirdpoint Management
Company

Photographer: Jordi Miralles

Location: New York, NY, USA

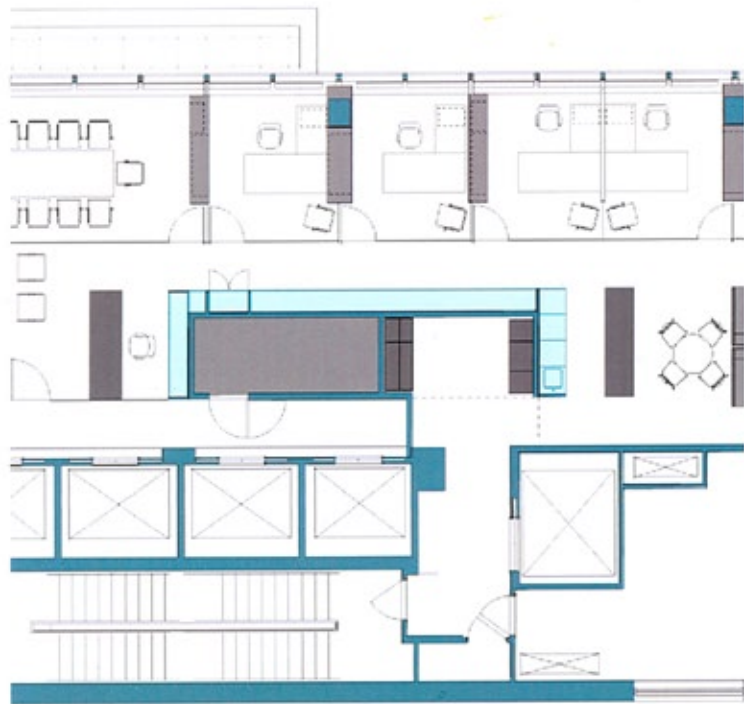
Completion date: 2001

Area: 5,000 SF









● Floor plan







- A shade of gray dominates the interior, which matches that of the mass of buildings outside and therefore helps to integrate the interior with the exterior. This color also helps to express the space as a cloud in the sky.



