

# INTERIOR DESIGN<sup>®</sup>

DECEMBER  
2008

bright  
bold  
bubbly

**Best of Year**





## SLADE ARCHITECTURE

RICKY KENIG RESIDENCE, BROOKLYN, NEW YORK

**Husband-and-wife principals** James and Hayes Slade were tasked with renovating this 100-year-old, 3,200-square-foot town house for the divorced co-owner of the Ricky's chain of beauty-supply stores and his three young daughters. In other words, they needed to blend a bachelor pad and Barbie's dream house without missing a beat. Their solution was to organize spaces by floor: The basement became a den, the ground floor a loftlike living area and kitchen, the second level bedrooms for the girls, and finally a top-floor retreat for the man of the house. Here, a glassed-in floating staircase, complete with a magnet wall, terminates at a home office, a bedroom, a bathroom, and a dressing area with the biggest single-guy luxury of all: shelving for 100 pairs of sneakers. —*Nicholas Tamarin* ➤

NANCY HOU, JEFF WANDERSMAN: PROJECT TEAM.



**Best of Year**  
URBAN HOUSE



### Slade Architecture

**project** Avalon Bowery Place II, New York.

**standout** The lobby of the 90-unit rental apartment building features pops of orange, walls clad in satin-finished mirror glass, and a cascade of ball bearings in nickel-plated steel.



### Perkins + Will

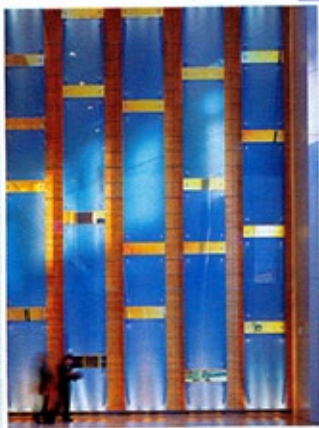
**project** Two Adams Place, Boston.

**standout** A floor-to-ceiling grille of vertical I-beams and white acrylic panels transforms an elevator bank into the billowy showstopper of this 1980's office building's atrium.

### Hickok Cole Architects

**project** Columbia Center, Washington, D.C.

**standout** Thanks to the glass facade of this office building's four-story, 4,220-square-foot atrium, strips of backlit laminated glass and a grove of internally lit polycarbonate rods glimmer for blocks.





“They needed to blend a bachelor pad and Barbie’s dream house without missing a beat”

