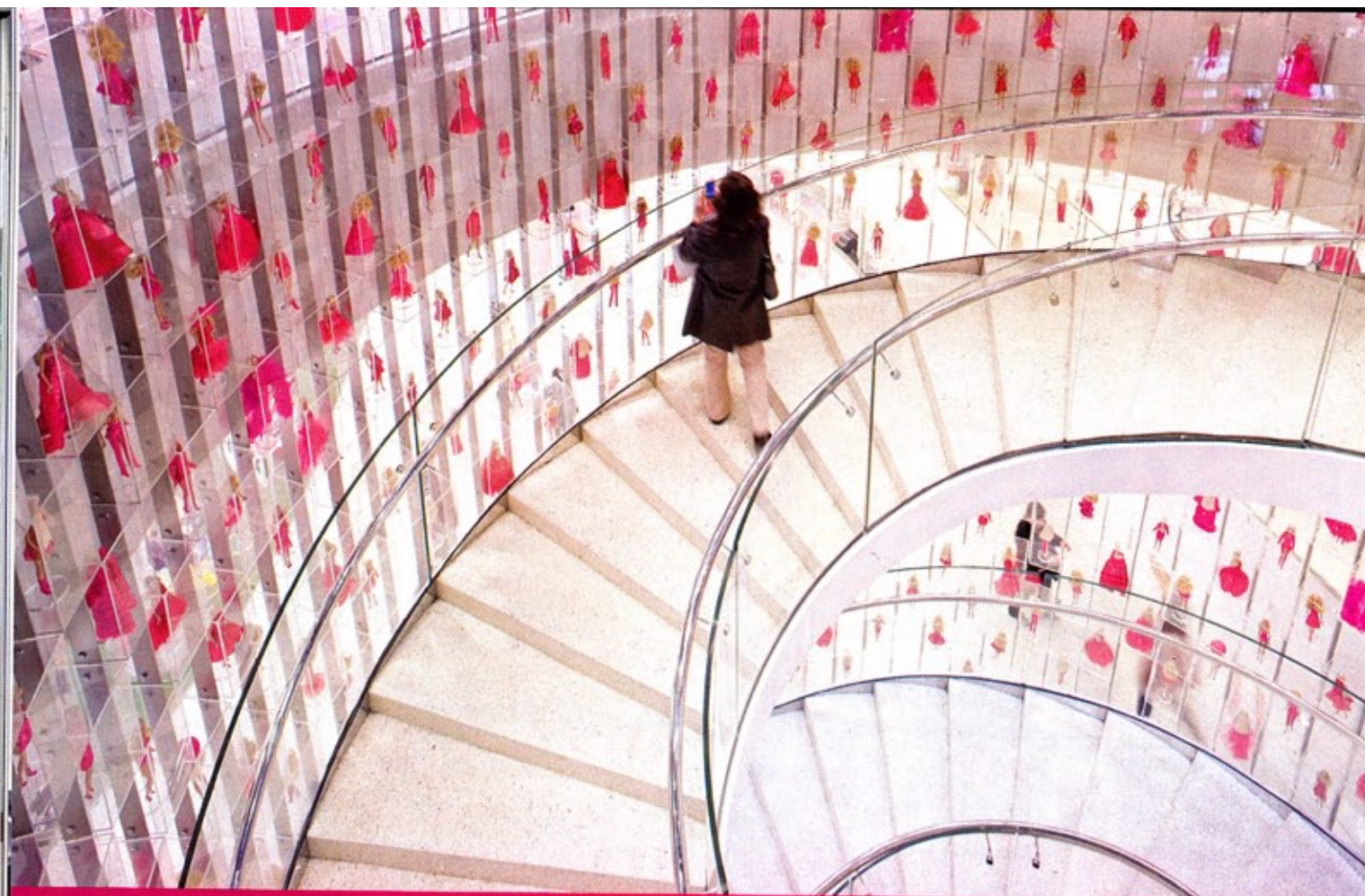


# INTERIOR DESIGN<sup>®</sup>

DECEMBER  
2009

*bestofyear*



HOUSE OF BARBIE, SHANGHAI  
SLADE ARCHITECTURE



As the parents of four children, Hayes and James Slade know toys. Perhaps that was a factor in the architect couple winning the commission for Shanghai's House of Barbie, which opened as part of the doll's 50th-birthday celebration. The six-story, 35,000-square-foot former office building is now what the Slades call an "unapologetically feminine interpretation of Barbie, past, present, and future." Shimmering pink, purple, and white at night, the facade—fritted glass over floral-pattern polycarbonate—hints at the fantasia inside. Pink gelled fluorescents light an escalator tunnel that leads to the upper floors, where glitter, beading, gold and mirrored glass mosaic tile, and plush carpet abound. The enclosure for a giant spiral staircase is built from clear acrylic boxes containing Barbies in various outfits, and the young customers get their fashion moment, too: They can stage their own runway shows, dressed in Barbie apparel. —Annie Block

EMILY ANDERSEN; TIA BAUMAN; TIAN GAO; KEITH GREENWALD; JEREMY KIM; ELIZA KOSHLAND; CHIA-PING LIN; JULIA MALLOY; JEFF WANDERSMAN; STEPHANIE WONG; RAJIV HERNANDEZ; HALLEY WUERTZ; PALMER THOMPSON-MOSS; ALLISON WEINSTEIN; PROJECT TEAM.

TIMAN BAAH

IVY LI